

# ASK AHCA 2023

ANSWERS TO QUESTIONS SUBMITTED TO THE  
BUREAUS OF PLAN & CONSTRUCTION AND  
FIELD OPERATIONS AND AGENCY UPDATES



**Eddie Alday**

Analyst II, Life Safety Lead Health Quality Assurance

850-443-8567

[Eddie.Alday@ahca.myflorida.com](mailto:Eddie.Alday@ahca.myflorida.com)

**Scott Waltz, NCARB**

Bureau Chief, Office of Plans and Construction

850-412-4485

[Scott.Waltz@ahca.myflorida.com](mailto:Scott.Waltz@ahca.myflorida.com)

**New Codes and Standards 2023  
39<sup>th</sup> Annual Seminar and Expo  
October 1-3, 2023**

**Ask AHCA 2023: Review of New  
Codes, Standards, Submission, and Inspection  
Requirements of AHCA**

**Course Number: AHCA2023.01**

Credit Designation: 1 LU| HSW

AIA CES Provider Number: E240

*October 1, 2023*



The AHCA seminar has teamed with a registered provider of AIA-approved continuing education under Provider Number E240. All registered AIA CES Providers must comply with the AIA Standards for Continuing Education Programs.

Any questions or concerns about this provider or this learning program may be sent to [cessupport@aia.org](mailto:cessupport@aia.org) or 800-242-3837 Option 3.

This learning program is registered with AIA CES for continuing professional education. As such, it does not include content that may be deemed or construed to be an approval or endorsement by the AIA of any material of construction or any method or manner of handling, using, distributing, or dealing in any material or product.

AIA continuing education credit has been reviewed and approved by AIA CES. Learners must complete the entire learning program to receive continuing education credit. AIA continuing education Learning Units earned upon completion of this course will be reported to AIA CES for AIA members. Certificates of Completion for both AIA members and non-AIA members are available upon request.

1

OBJECTIVE

Learn about the interpretations from the AHCA inspectors regarding relevant NFPA codes and standards, the Florida Building Code, and the FGI Guidelines.

2

OBJECTIVE

Understand how to be prepared for a fire safety survey from the field office fire safety inspectors at AHCA and for CMS surveys.

3

OBJECTIVE

Learn the new requirements of NFPA 101 Life Safety Code, 2021 edition and how to apply the NFPA101 Life Safety Code, 2012 edition that is enforced by the federal government.

4

OBJECTIVE

Be able to explain and apply the testing and maintenance requirements for health care facilities found in these codes.

**Thank you for your attention!**



# RESOURCES

## Plans & Construction Webpage:

<https://ahca.myflorida.com/health-care-policy-and-oversight/office-of-plans-and-construction>

## Field Operations Webpage:

<https://ahca.myflorida.com/health-care-policy-and-oversight/bureau-of-field-operations>

## Health Facility Regulation Webpage:

<https://ahca.myflorida.com/health-care-policy-and-oversight/bureau-of-health-facility-regulation>

## Florida Health Finder:

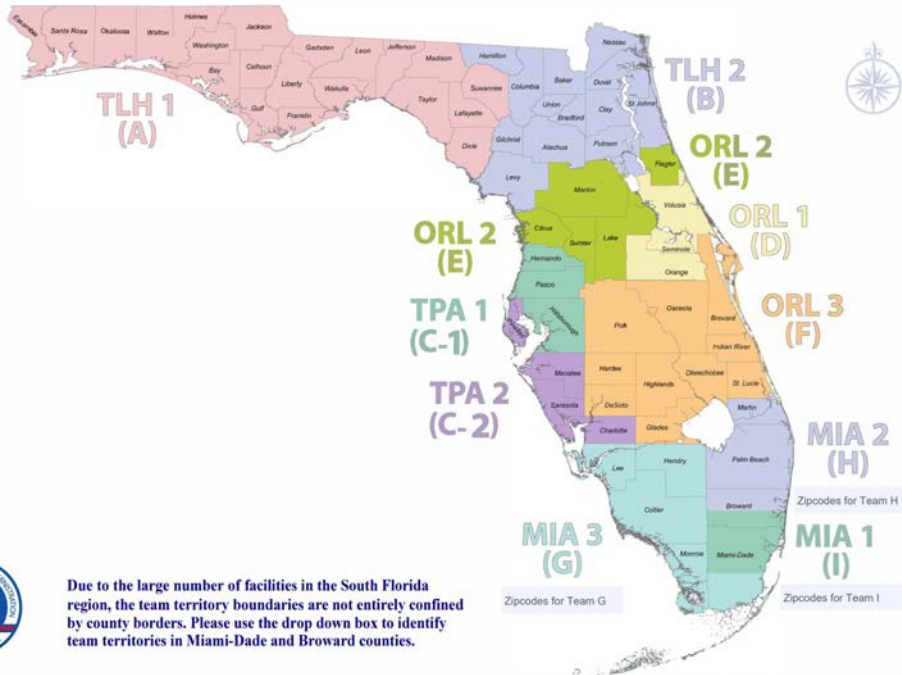
<https://quality.healthfinder.fl.gov/>



# Plans & Construction Webpage

# RESOURCES

## OPC Team Territories



Due to the large number of facilities in the South Florida region, the team territory boundaries are not entirely confined by county borders. Please use the drop down box to identify team territories in Miami-Dade and Broward counties.

### AHCA OFFICE OF PLANS AND CONSTRUCTION

Scott Walz, NCARB - Bureau Chief - Cell: (850) 443-3534

Office	Address	Phone
<b>Tallahassee Office</b>	2727 Mahan Drive - Mail Stop #24 Tallahassee, FL 32308 (850) 412-4477	(850) 412-4484 (850) 412-4476 (850) 412-4475
<b>Orlando Office</b>	400 W Robinson St., Suite A325 - Mail Stop HGA 7 Orlando, FL 32801 (407) 420-2504	(850) 412-4488 (850) 412-4482 (850) 412-4488
<b>Tampa Office</b>	6800 North Dale Mabry Highway, Suite 220 - Mail Stop HQA 6 Tampa, FL 33614 (813) 350-4833	(850) 412-4486 (850) 412-4482 (850) 412-4488
<b>Miami Office</b>	8333 NW 53rd Street, Suite 301 Doral, FL 33166 (305) 593-3005	(850) 228-2120 (850) 228-9815 (850) 702-8403

Team	Member	Office Phone	Cell Phone
Tallahassee	TLH 1 (A) Mukhtar Kabuka	(850) 412-4484	(850) 228-1976
	TLH 1 (E) Yurly Schayev	(850) 412-4476	(850) 228-7726
	TLH 2 (B) Jesse Diaz	(850) 412-4475	(850) 443-7329
Tampa	TPA 2 (C-1) Ramesses Sidhom	(850) 412-4486	(850) 228-2120
	TPA 2 (C-2) Mark Bying	(850) 412-4482	(850) 228-9815
	TPA 2 (C-2) Ramess Appaboo	(850) 412-4488	(850) 702-8403
Orlando	ORL 1 (D) Al Barmahal	(813) 350-4873	(813) 334-2516
	ORL 2 (E) Kamaluddin Syed	(813) 350-4813	(813) 351-0318
	ORL 2 (E) Youny (Joni) Attalla	(407) 420-2545	(407) 409-0823
Miami	MIA 2 (H) David Partenheimer	(813) 350-4835	(813) 449-3985
	MIA 2 (H) Vacant		
	MIA 2 (H) Michael Ippolito	(813) 350-4873	(813) 442-0241
Orlando	ORL 1 (D) Gary Birkbeck	(407) 420-2544	(407) 463-7158
	ORL 1 (D) Jeff Louge	(407) 420-2511	(407) 463-0131
	ORL 1 (D) Malcolm Alston	(407) 420-2543	(407) 463-8239
Orlando	ORL 2 (E) Marc Shapiro	(407) 420-2549	(407) 463-4354
	ORL 2 (E) Luis Ocasio	(407) 420-2586	(407) 797-2974
	ORL 3 (F) David Weissman	(407) 420-2548	(407) 463-4870
Miami	MIA 1 (I) Sanjay Kuchhar	(407) 420-2536	(407) 462-5992
	MIA 1 (I) Jose Cardador	(407) 420-2547	(407) 462-7272
	MIA 1 (I) Vacant		
Miami	MIA 1 (I) Faghi Afham	(305) 593-3090	(305) 793-4608
	MIA 1 (I) Jose Tejera	(305) 593-3021	(305) 299-9868
	MIA 1 (I) Nouri Zahrif Dzag	(305) 593-3094	(305) 299-6892
Miami	MIA 2 (H) Hany George	(305) 593-3091	(321) 230-3384
	MIA 2 (H) Sheik Salim	(305) 593-3098	(305) 781-9762
	MIA 2 (H) Massoud Dabiri	(305) 593-3092	
Miami	MIA 3 (G) Arnaldo Gonzalez	(305) 593-3095	(786) 239-0291
	MIA 3 (G) Humberto Mendosa	(305) 593-3097	
	MIA 3 (G) Carlos Santana	(305) 593-3099	

Plans and Construction Supervisors				
Name	Title	Area(s) Supervised/Managed	Office Phone	Cell Phone
Said Banihmad, NCARB	Architect Supervisor	Supervises all architects, manages TLH and TPA offices	(850) 412-4470	(850) 228-0367
Iason Jiang, P.E.	PE Administrator	Supervises all mechanical engineers, manages ORL office	(850) 412-4487	(850) 443-6994
Orlando Padin, P.E.	PE Administrator	Supervises all electrical engineers, manages MIA office	(305) 593-3096	(786) 378-9582
Mark Sidhom	Oper. & Man. Consultant	Supervises all administrative staff, technical process issues	(850) 412-4523	(850) 273-3441

Other Professional Staff				
Name	Title	Roles and Responsibilities	Office Phone	Cell Phone
Wayne Young, NCARB	Senior Architect	Curatory Reviews	(407) 420-2546	

Administrative Staff				
Name	Title	Roles and Responsibilities	Office Phone	Office
Quinda Gardner	Admin. Assort II	HR Coordinator	(850) 412-4479	Tallahassee
Carleah Gee	Admin. Assort I	Schedules stand-up reviews for TLH Teams	(850) 412-4473	Tallahassee
Danya Arifcchi	Admin. Sect.	Processes plan review submissions for all teams	(850) 412-4480	Tallahassee
Cheryl Sharp	Admin. Sect.	Schedules stand-up reviews for TPA Teams; Processes curatory reviews	(813) 350-4833	Tampa
Yitmin Aquino	Admin. Sect.	Schedules stand-up reviews for ORL Teams	(407) 420-2542	Orlando
Graciela Vanes	Admin. Sect.	Schedules stand-up reviews for MIA Teams	(305) 593-3093	Miami

Please visit our website to learn more about our procedures:  
<http://ahca.myflorida.com/MCHQ/psou/>

To Schedule a Stand-Up Reviews, Please Email Documents:  
 Tallahassee Office: [OPCSTANDUP.TLH@ahca.myflorida.com](mailto:OPCSTANDUP.TLH@ahca.myflorida.com)  
 Miami Office: [OPCSTANDUP.MIA@ahca.myflorida.com](mailto:OPCSTANDUP.MIA@ahca.myflorida.com)  
 Orlando Office: [OPCSTANDUP.ORL@ahca.myflorida.com](mailto:OPCSTANDUP.ORL@ahca.myflorida.com)  
 Tampa Office: [OPCSTANDUP.TPA@ahca.myflorida.com](mailto:OPCSTANDUP.TPA@ahca.myflorida.com)

To contact via email, Please click on the person's name that you're trying to reach  
 If you have any questions concerning Licensure, Please dial (850) 412-4549

Click on map to view team territory map



# Plans & Construction Webpage

# RESOURCES

## Plans and Construction

2023 AHCA Schedule

	Stand-up Review Week	Inspection Week	Plan Review Week
Green Weeks	All Tallahassee & Tampa Teams	ORL 1 (D), ORL 3 (F) & MIA 1 (I)	ORL 2 (E), MIA 2 (H) & MIA 3 (G)
Red Weeks	All Orlando Teams	TLH 1 (A), TPA 2 (C2), MIA 2 (H) & MIA 3 (G)	TLH 2 (B), TPA 1 (C1) & MIA 1 (I)
Blue Weeks	All Miami Teams	TLH 2 (B), TPA 1 (C1) & ORL 2 (E)	TLH 1 (A), TPA 2 (C2), ORL 1 (D) & ORL 3 (F)

To view the map of team territories please see [http://ahca.myflorida.com/MCHQ/Plans/pdfs/OPC\\_Team\\_Territories.pdf](http://ahca.myflorida.com/MCHQ/Plans/pdfs/OPC_Team_Territories.pdf)

## Plans and Construction

2024 AHCA Schedule

	Stand-up Review Week	Inspection Week	Plan Review Week
Green Weeks	All Tallahassee & Tampa Teams	ORL 1 (D), ORL 3 (F) & MIA 1 (I)	ORL 2 (E), MIA 2 (H) & MIA 3 (G)
Red Weeks	All Orlando Teams	TLH 1 (A), TPA 2 (C2), MIA 2 (H) & MIA 3 (G)	TLH 2 (B), TPA 1 (C1) & MIA 1 (I)
Blue Weeks	All Miami Teams	TLH 2 (B), TPA 1 (C1) & ORL 2 (E)	TLH 1 (A), TPA 2 (C2), ORL 1 (D) & ORL 3 (F)

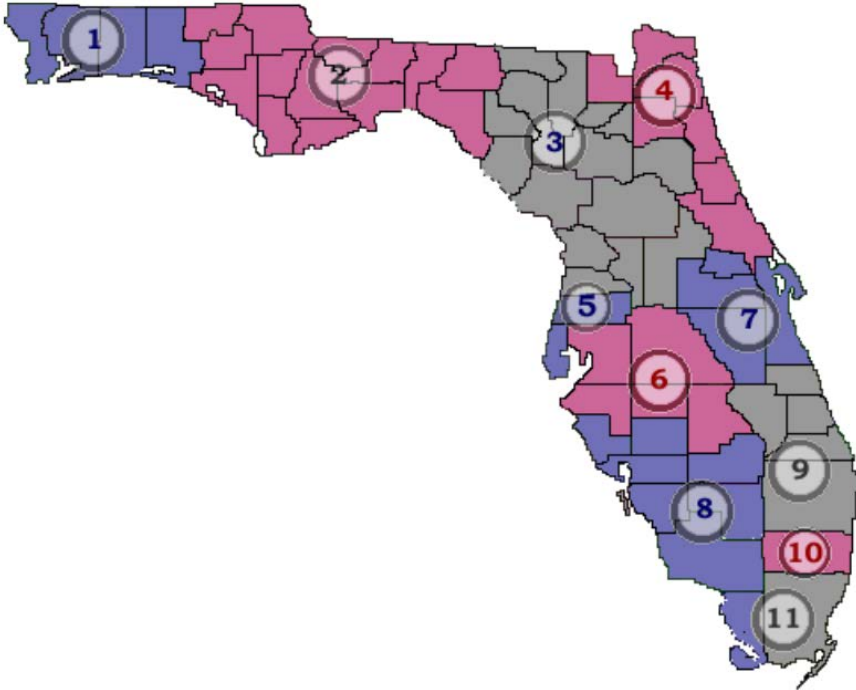
To view the map of team territories please see [http://ahca.myflorida.com/MCHQ/Plans/pdfs/OPC\\_Team\\_Territories.pdf](http://ahca.myflorida.com/MCHQ/Plans/pdfs/OPC_Team_Territories.pdf)





# Field Operations Webpage

# RESOURCES



## HCPO Field Offices

### Field Office 1 & 2

**Tallahassee Field Office** - Bay, Calhoun, Escambia, Franklin, Gadsden, Gulf, Holmes, Jackson, Jefferson, Liberty, Leon, Madison, Okaloosa, Santa Rosa, Taylor, Wakulla, Walton and Washington

AHCA 1: Escambia, Okaloosa, Santa Rosa, Walton,  
AHCA 2: Bay, Calhoun, Franklin, Gadsden, Gulf, Holmes, Jackson, Jefferson, Leon, Liberty, Madison, Taylor, Wakulla, and Washington

Karla Blasley,  
Field Office Manager

2727 Mahan Drive, Mail Stop #46  
Tallahassee, Florida 32308  
(850) 412-4540 Phone  
(850) 922-9162 Fax

### Field Office 3

**Alachua Field Office** - Alachua, Bradford, Citrus, Columbia, Dixie, Gilchrist, Hamilton, Hernando, Lafayette, Lake, Levy, Marion, Putnam, Sumter, Suwannee and Union

Alta Carnes,  
Field Office Manager

1403 N.W. Hwy. 441, Suite 800  
Alachua, Florida 32615-5669  
(386) 462-6201 Phone  
(386) 418-5300 Fax

### Field Office 4

**Jacksonville Field Office** - Baker, Clay, Duval, Flagler, Nassau, St. Johns and Volusia

Rob Dickson,  
Field Office Manager

921 N. Davis St. Bldg A, Ste 115  
Jacksonville, Florida 32209  
(904) 798-4201 Phone  
(904) 359-6054 Fax

### Field Office 5 & 6

**Clearwater Field Office** - Hardee, Highlands, Hillsborough, Manatee, Pasco, Pinellas and Polk

AHCA 5: Hardee, Highlands, Hillsborough, Manatee, and Polk  
AHCA 6: Pasco, Pinellas

Fran Lima,  
Field Office Manager

15500 Lightwave Dr, Suite 101  
Clearwater, Florida 33760  
(727) 552-2000 Phone  
(727) 552-1162 Fax

### Field Office 7

**Orlando Field Office** - Brevard, Orange, Osceola and Seminole

Theresa DeCaris,  
Field Office Manager

Hurston South Tower, Suite 5309  
400 W. Robinson St.  
Orlando, Florida 32801  
(407) 420-2502 Phone  
(407) 245-0998 Fax

### Field Office 8

**Fort Myers Field Office** - Charlotte, Collier, DeSoto, Glades, Hendry, Lee, Monroe and Sarasota

Cynthia Brandt,  
Field Office Manager

Regional Services Center  
2295 Victoria Ave., Room 340  
Ft. Myers, Florida 33901  
(239) 335-1315 Phone  
(239) 338-2372 Fax

### Field Office 9 & 10

**Delray Beach Field Office** - Broward, Indian River, Martin, Okeechobee, Palm Beach and St. Lucie

AHCA 9: Indian River, Martin, Okeechobee, Palm Beach and St. Lucie  
AHCA 10: Broward

Arlene Mayo-Davis,  
Field Office Manager

5150 Linton Boulevard, Suite 500  
Delray Beach, Florida 33484  
(561) 381-5840 Phone  
(561) 496-5924 Fax

### Field Office 11

**Miami Field Office** - Miami-Dade

Arlene Mayo-Davis,  
Field Office Manager

8333 N.W. 53rd St., Suite 200  
Miami, Florida 33166  
(305) 593-3100 Phone  
(305) 499-2190 Fax



# Field Operations Webpage

# RESOURCES

## Bureau of Field Operations

Complaint Administration Unit

**Current Regulations in ASPEN - Survey**

Health Care Policy and Oversight  
Field Offices

Office of Risk Management and  
Patient Safety

Survey and Certification Support  
Branch

## FED - K0913 - Electrical Systems - Wet Procedure Locations

**Title** Electrical Systems - Wet Procedure Locations

**Type** Standard

**CFR** NFPA 101

### Regulation Definition

Electrical Systems - Wet Procedure Locations

Operating rooms are considered wet procedure locations, unless otherwise determined by a risk assessment conducted by the facility governing body. Operating rooms defined as wet locations are protected by either isolated power or ground-fault circuit interrupters. A written record of the risk assessment is maintained and available for inspection.

6.3.2.2.8.4, 6.3.2.2.8.7, 6.4.4.2



# Florida Health Finder

# RESOURCES

FloridaHealthFinder



a service of the Agency for Health Care Administration

Compare ▾

Price

Locate



## Facility/Provider Locator

Click **Search by Facility Type / Location** to get a list of Florida health care facilities.

[Search by Facility Type/Location](#)

Click **Search by Proximity** to find facilities closest to the street address that you enter within the distance you choose.

[Search by Proximity](#)

To learn more, select an option below

 [Transparency Resources - Florida Patients Right to Know](#) >

 [Health Care Resources](#) >

 [Health Care Education](#) >

 [Health Care Researcher Data - Order Data/Data Dictionary](#) >

 [Health Information Technology](#) >

 [AHCA Resources](#) >



# Florida Health Finder

# RESOURCES

### General Search

Facility/Provider Type:  (Required)

Community Residential Home:  Please be advised that local zoning authorities may have additional restrictions or requirements not under the jurisdiction of the Agency for Health Care Administration. Contact your local zoning authorities for any specific requirements. See also [419.001 F.S.](#)

License Status:

Name:

Street Address:

City:

Zip Code:

County:  ...

AHCA Number (File Number):

AHCA Field Office:  ...

License Number:

Affiliated Individual/Entity:

Profit Status:

Current Emergency Actions:

Baker Act Receiving Facility:   
(Hospitals and Crisis Stabilization Units Only)

---

Advanced Search (Optional - Click on down arrow for options) ▾



# Florida Health Finder

# RESOURCES

You may also view [reports of frequently requested information](#).

- Include Controlling Interest in Excel Export
- Include Emergency Power Plan data in Excel Export (ALFs and nursing homes only)

**Note: Including controlling interest may cause providers to be listed more than once.**

Export to Excel

Print

Start Over

Name	Type	Street Address	City	State	Zip	Phone Number	Licensed Beds
ADVENTHEALTH CARROLLWOOD - 100069	Hospital	7171 N DALE MABRY HWY	TAMPA	FL	33614	(813) 932-2222	119
ADVENTHEALTH TAMPA - 100173	Hospital	3100 E FLETCHER AVE	TAMPA	FL	33613	(813) 971-6000	626
H LEE MOFFITT CANCER CENTER & RESEARCH INSTITUTE HOSPITAL - 110009	Hospital	12902 MAGNOLIA DR	TAMPA	FL	33612-9497	(813) 745-4673	218
HCA FLORIDA SOUTH TAMPA HOSPITAL - 100206	Hospital	2901 W SWANN AVE	TAMPA	FL	33609	(813) 873-6450	173
HCA FLORIDA WEST TAMPA HOSPITAL PART OF HCA FLORIDA SOUTH TAMPA - 100255	Hospital	6001 WEBB RD	TAMPA	FL	33615	(813) 888-7060	201
KINDRED HOSPITAL-BAY AREA-TAMPA - 100115	Hospital	4555 S MANHATTAN AVE	TAMPA	FL	33611	(813) 424-5407	73
KINDRED HOSPITAL-CENTRAL TAMPA - 100143	Hospital	4801 N HOWARD AVE	TAMPA	FL	33603	(813) 874-7575	102
MOFFITT MCKINLEY HOSPITAL - 23960253	Hospital	10901 MCKINLEY DR	TAMPA	FL	33612	(813) 745-4673	128
ST JOSEPHS HOSPITAL - 100075	Hospital	3001 W MARTIN LUTHER KING JR BLVD	TAMPA	FL	33607	(813) 870-4000	874
ST JOSEPHS HOSPITAL BEHAVIORAL HEALTH CENTER - 23960113	Hospital	4918 HABANA AVE	TAMPA	FL	33607	(813) 870-4000	60
TAMPA GENERAL HOSPITAL - 100128	Hospital	1 TAMPA GENERAL CIR	TAMPA	FL	33606	(813) 844-7000	1040
TAMPA GENERAL REHABILITATION HOSPITAL - 23960167	Hospital	1307 W KENNEDY BLVD	TAMPA	FL	33606	(813) 893-6000	80

Export to Excel

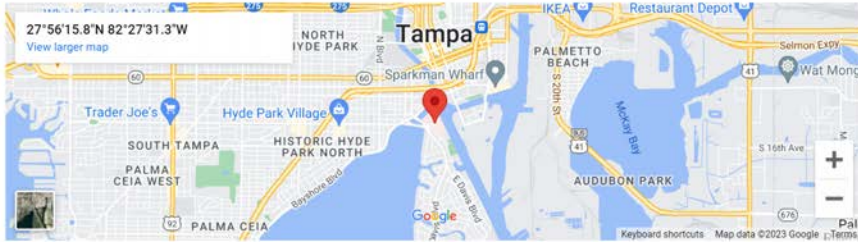
Print

Start Over



# Florida Health Finder

# RESOURCES



[Print Hospital Quality Measures and Patient Safety Information](#)

### Street Address

1 TAMPA GENERAL CIR  
TAMPA, FL 33606  
Phone: (813) 844-7000  
County: Hillsborough

### Mailing Address

PO BOX 1289  
TAMPA, FL 33601  
County: Hillsborough

Website: <http://www.tgh.org/>  
Accredited by: Joint Commission

### Hospital-Based Off-Campus Emergency Department

#### KENNEDY EMERGENCY CENTER 🚑

1301 W KENNEDY BLVD  
TAMPA, FL 33606  
County: Hillsborough

#### TGH EMERGENCY CENTER BRANDON 🚑

10740 PALM RIVER ROAD  
TAMPA, FL 33619  
County: Hillsborough

### Emergency Actions:

None

### AHCA Reports:

[Inspection Reports](#)  
[Inspection Details](#)

[Get Directions](#)

Facility/Provider Type: Hospital  
Chief Executive Officer: MR JOHN COURIS  
Financial Officer: MARK RUNYON  
Owner/Licensee: FLORIDA HEALTH SCIENCES CENTER INC  
Owner/Licensee Since: 10/1/1997  
Profit Status: Not-For-Profit  
Licensed Beds: 1,040

### Bed Types:

Comprehensive  
Medical Rehabilitation : 59  
NICU Unit : 82  
Acute Care : 899  
AHCA Number (File Number): 100128  
AHCA Field Office: 06  
License Number: 4044

Current License Effective: 7/7/2023  
Expires: 12/29/2023

License Status: LICENSED

### Compare Quality and/or Pricing:

[Compare - Hospitals](#)

### Services/Characteristics:

Additional Address Type :	Hospital-Based Off-Campus Emergency Department, Off-Site Outpatient Locations
Classification :	Class 1 Hospital
Emergency Department :	Yes
Emergency Services :	Anesthesia, Burns, Cardiology, Cardiovascular Surgery, Colon & Rectal Surgery, Emergency Medicine, Endocrinology, Gastroenterology, General Surgery, Gynecology, Hematology, Internal Medicine, Nephrology, Neurology, Neurosurgery, Obstetrics, Ophthalmology, Oral/Maxillo-facial Surgery, Orthopedics, Otolaryngology, Plastic Surgery, Podiatry, Psychiatry, Pulmonary Medicine, Radiology, Thoracic Surgery, Urology, Vascular Surgery
Organ Transplant Programs :	Adult Heart Transplant Program, Adult Kidney Transplant Program, Adult Liver Transplant Program, Adult Lung Transplant Program, Adult Pancreas Transplant Program, Pediatric Kidney Transplant Program
Programs :	Burn Unit, Comprehensive Stroke Center, Level 2 Adult Cardiovascular Services, Neonatal Intensive Care Unit Level III
Special Designation :	Statutory Teaching Hospital
Special Services :	Adult Bone Marrow Transplant Program
Trauma Center :	Level 1 Trauma Center
Baker Act Receiving Facility :	No



# Questions & Answers



# QUESTION #1

Does the Office of Plans Correction needed to be notified when changes are made to locking arrangements?





ANSWER

YES!



## QUESTION #2

What types of locking arrangements can be used to secure a unit or area in a health care facility?



# ANSWER

- Delayed Egress



# ANSWER

- Delayed Egress
- Sensor-release of electrical locking systems



# ANSWER

- Delayed Egress
- Sensor-release of electrical locking systems
- Locks complying with LSC 18.2.2.2.5



# NFPA 101 18.2.2.2.5

ANSWER

## LCS 18.2.2.2.5.1 – “Clinical Needs”

1. Provisions shall be made for the rapid removal of occupants by means of one of the following:
  - Remote control of locks from within the locked smoke compartment
  - Keying of all locks to keys carried by staff at all times
  - Other such reliable means available to the staff at all times
2. Only one locking device shall be permitted on each door.



# NFPA 101 18.2.2.2.5

## ANSWER

### LSC 18.2.2.2.5.2 – “Special Patient Safety Needs”

1. A total (complete) smoke detection system is provided throughout the locked space in accordance with 9.6.2.9, or locked doors can be remotely unlocked at an approved, constantly attended location within the locked space.
  - If smoke detection option is used, the detection of smoke must unlock all doors in the means of egress.



# NFPA 101 18.2.2.2.5

## ANSWER

LSC 18.2.2.2.5.2 – “Special measures patient safety”

2. The building is protected throughout by an approved, supervised automatic sprinkler system **and** a waterflow in the system unlocks all locks.
3. The locks are electrical locks that fail safely so as to release upon loss of power to the device.





# NFPA 101 18.2.2.2.5

## ANSWER

LSC 18.2.2.2.5.2 – “Special measures patient safety”

4. Any one of the provisions for rapid removal of occupants (remote control of locks from inside the locked area, all staff carrying keys, or other reliable method available to all staff at all times)
5. Hardware for new electric lock installations is listed in accordance with ANSI/UL 294, Standard for Access Control System Units.



# QUESTION #3

Can photos, videos, or other documentation be submitted in lieu of a survey?



# ANSWER

- A live survey (onsite or videoconference) must be conducted for all projects and all major phases of construction. OPC may however, accept evidence of the correction of deficiencies cited during a recent survey.
- Not all deficiencies may be cleared using this process and the use of post survey documentation is not a substitute for being ready for the survey.



# ANSWER

- The acceptance of post survey documentation is at the discretion of the reviewer based on their architectural and engineering judgement.
- The intent to submit documentation must be indicated during the survey exit meeting.
- Documentation must be emailed to the reviewer no later than 5:00 PM on the Monday following the survey.



## QUESTION #4

How do you maintain the required minimum of 2 outdoor air changes per hour in a design that uses dedicated VAV boxes resulting in different dilutions/VAV positions in each patient room?



# ANSWER

- ASRAE 170 requires HVAC systems to be capable of maintaining at least the minimum ACH rates for outdoor air and total air changes specified in Table 7.1. The use of VAV boxes is permitted, if they do not compromise the systems ability to achieve the minimum required air changes.

See ASHRAE 170 6.7.6.1 & 7.1.a.1.



# ANSWER

- To maintain the required outdoor air requirements for each space the system must be designed to supply the required quantity of outdoor air even when some or all VAVs are at the lowest air flow setting (4 total ACH for a patient room).
- When the VAV boxes for individual rooms are at a higher air flow setting the total air change and outdoor air change rates will exceed minimum requirements in those rooms.



# ANSWER

- The outdoor air unit typically supplies air at a constant rate, but a variable rate of delivery may be used where the system controls coordinate with the needs of the air handling unit to supply outdoor air at the rate needed for individual spaces.





## QUESTION #5

Both NFPA 99 and the FGI Guidelines address restrictions for utilities passing through telecommunications rooms that are unrelated to supporting the function of the room. The requirements differ however in that the Guidelines does permit these unrelated utilities to pass through the room if none pass over the top of any equipment while NFPA 99 does not allow them to pass through the room at all.



## QUESTION #5

What is the Agency's position on these differing requirements?

In a building where telecommunication rooms are vertically stacked, would it be acceptable to run any of the following through the lower room to serve the upper telecommunication room: Power feeders? Fire suppression system? Fiber optic cables? Telephone/data cables? Fire alarm cables? Sprinkler riser?



# ANSWER

- Where two **separate** codes or standards differ, the more stringent requirements prevail.
- For new construction, NFPA 99's prohibition of non-related mechanical utilities passing through the TDR room is to be strictly enforced.
- For renovations of an existing facility, some consideration of hardships and alternative means of compliance may be appropriate.



# ANSWER

Where telecommunications rooms are vertically stacked the following may pass through the rooms:

- Power feeders
- Fiber optic cables
- Telephone/data cables
- Fire alarm cables



## Sprinkler risers may not be run through the rooms

### **7.3.1.2.3.4 Location Requirements and Restrictions.**

**(A)**

Switchboards, panelboards, transformers, and similar electrical equipment that are not directly related to the support of the TR shall not be installed in the TR.

**(B)**

Any mechanical equipment or fixtures (e.g., water or drainage piping of any kind, ductwork, pneumatic tubing) not directly related to the support of the TR shall not be installed in, pass through, or enter the TR.



## QUESTION #6

Both NFPA 99 and the FGI Guidelines explicitly permit a telecommunications entrance facility (EF) and a telecommunications equipment room (TER) to be collocated. Both documents also require at least one telecommunications room (TR) per floor, but they are silent as to whether the TR can be combined with the EF and TER.

Will the Agency allow these three functions to share a room?



# ANSWER

Yes. Both NFPA and FGI have provided informal interpretations affirming all three required function can be combined in a single room if the room meets the requirements for each function and that the distance to the most remote telecommunication outlet does not exceed 295 feet.



# ANSWER



## TECHNICAL QUESTIONS

Thank you for your question on the 2018 edition of NFPA 99, Health Care Facilities Code.

There are no requirements in Chapter 7 that prohibits the entrance facility (EF), telecommunications equipment room (TER), and telecommunications room (TR) from being in the same room or area. If this shared condition does exist, all Chapter 7 requirements applicable to each of the three rooms or spaces must be complied with.

**Important Notice:** Any opinion expressed in this correspondence is the personal opinion of the author and does not necessarily represent the official position of the NFPA or its Technical Committees. In addition, this correspondence is neither intended, nor should it be relied upon, to provide professional consultation or services.

If you have a follow-up question directly related to this inquiry, please reply to this email. If you have another question on either a separate topic or different document please return to the document information pages and submit your new question by clicking on the "Technical Questions" tab.

Contact: john gill  
Create Date: 8/17/2022

Document Number: 99  
Edition: 2018  
Section: 7.3.1.2  
Subject: Space requirements for TR and TER rooms  
Question for NFPA: for a small healthcare facility under 20000 SF (e.g. a Free-standing Emergency Department) is there any prohibition of locating the EF, TER, and TR in the same room, where the room is adequately sized for the required equipment racks and located such that all telecomm work outlets are within 295 feet of cable length to the room?

See below FGI opinion on all 3 comm functions in a single room. They concur with me

**From:** Yvonne Chiarelli <yvonne@fgiguideines.org>  
**Sent:** Thursday, August 25, 2022 10:56 AM  
**To:** John Gill <JGill@Gastudio.com>  
**Cc:** Website <website@fgiguideines.org>  
**Subject:** RE: New submission from Formal Interpretation of the Guidelines

[EXTERNAL EMAIL]

Re: 2018 *Guidelines for Design and Construction of Hospitals*

Good morning, John:

We reviewed your query. Combining these three rooms into one is not precluded as long as compliance with all of the requirements of each section is met. Note that access to the room would need to be restricted [2.1-8.5.2.1 (2)(a)], and that 292 feet is the maximum cable distance required for Ethernet cables from the termination point in the technology distribution room and each wall outlet [2.1-8.5.2.3 (1)(b)].

Best regards,  
Yvonne Chiarelli  
Associate Editor  
Facility Guidelines Institute | [www.fgiguideines.org](http://www.fgiguideines.org)  
[yvonne@fgiguideines.org](mailto:yvonne@fgiguideines.org)



**To users of the FGI Guidelines documents:** Please visit this page <https://www.fgiguideines.org/guidelines/errata-and-addenda> on the FGI website to download current errata sheets for these documents to make sure you have an up-to-date version of the *Guidelines* content.





## QUESTION #7

The FGI Guidelines requires the commissioning of many critical systems for new construction and when those systems are replaced or modified.

Does AHCA require this documentation to be submitted for review?



# ANSWER

No, the commissioning report is not required to be submitted for review. The survey team may inquire if commissioning has been completed, and if the documentation has been shared with the facility as required. Some of the documentation included in the commissioning report, such as the test and balance report, does need to be available for the survey team to review.



## QUESTION #8

The use of horn/strobes to annunciate a fire alarm activation is disruptive in healthcare facilities and can be dangerous in patient care areas. The Life Safety Code and NFPA 99 permits the use of private operating mode in patient care areas.

What is the Agency's position on private operating mode?



# ANSWER

We are strongly in favor of the use of private operating mode in health care facilities in areas where patients require staff assistance to respond to an emergency. Not only do the NFPA codes permit its use the Florida Building Code requires it.



## 449.3.12.2

In all inpatient and outpatient care rooms, spaces and areas, including sleeping, treatment, diagnostic, and therapeutic, the private operating mode as permitted and described in NFPA 72, *National Fire Alarm and Signaling Code*, shall be required. Only the attendants and other personnel required to evacuate occupants from a zone, area, room, floor, or building shall be required to be notified. Audible and visual notification devices shall only be permitted to be located at the care providers' stations, the soiled workroom, soiled holding room, clean workroom, staff lounge, medication preparation room, and nurse or supervisor's office, and other staff rooms or areas as determined by the governing body of the facility.



# ANSWER

**R**escue patients in immediate danger

**A**larm, use pull station to activate alarm

**C**ontain smoke & fire by closing doors

**E**xtinguish/ Evacuate smoke compartment

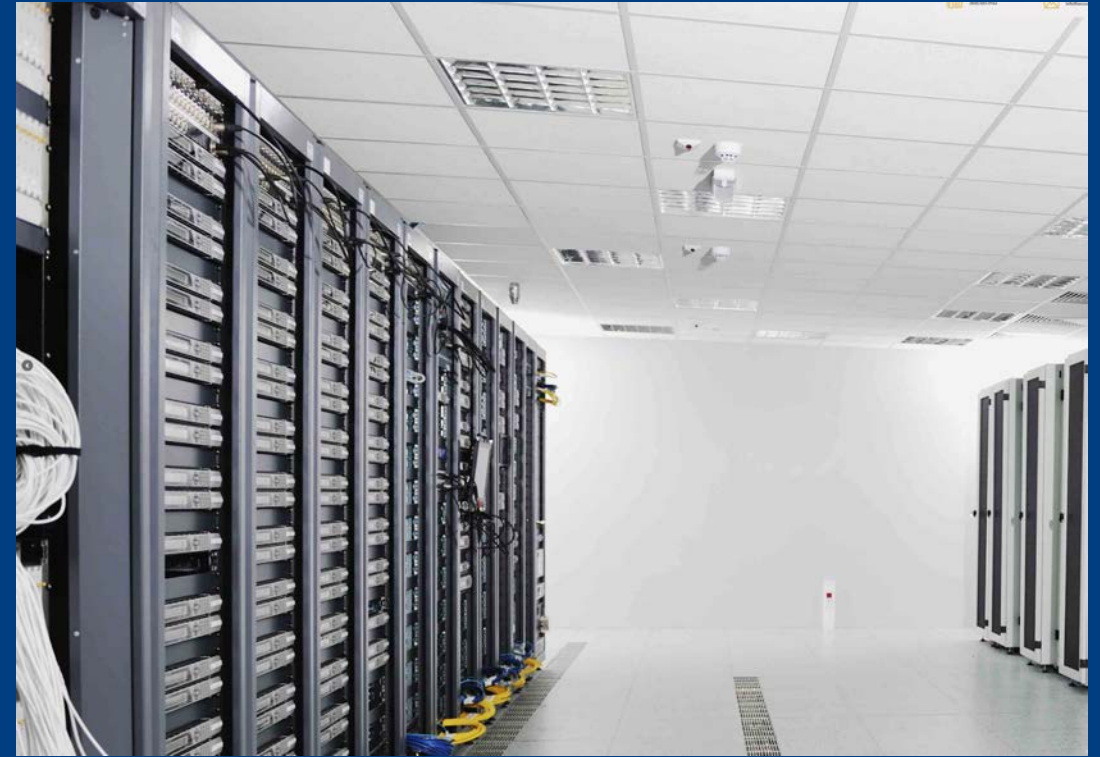


## QUESTION #9

We have numerous clients that are installing and retrofitting more elaborate technology (A/V, video systems) into their operating rooms. What is the requirement for this equipment?



# ANSWER





# ANSWER

OR integration equipment may be located in an operating room if it only serves the OR in which it is located and it is contained within casework in a manner which permits terminal cleaning of the OR. Open racks are not allowed in the OR. Equipment serving multiple ORs and/or in open racks, must be located in a telecommunications rooms or systems component room. This room is not permitted to open into the operating room.



# ANSWER

## **2.2-3.4.4.6 System component room**

- (1) A system component room that meets the requirements in Section 2.2-3.5.2.5 (System component room) shall be provided for each hybrid operating room.
- (2) The system component room shall be permitted to be shared among multiple hybrid operating rooms.



# ANSWER

**\*2.2-3.5.2.5 System component room.** Where a system component room is provided, it shall meet the requirements in this section.

A2.2-3.5.2.5 Purposes for a system component room. Many imaging modalities require the use of electronics components that may be required or preferred to be located in a room unto themselves for heat load, infection control, noise, or serviceability reasons (or combinations thereof).

**Location:** For Class 3 imaging rooms, the system component room shall not open into the imaging room or any restricted space.



# ANSWER

**Space requirements.** The system component room shall be sized to accommodate the following as indicated by the imaging equipment manufacturer(s), including the clear floor area:

- (a) Transformers
- (b) Power distribution equipment
- (c) Power conditioning/uninterruptible power supply equipment
- (d) Computers
- (e) Associated electronics and electrical gear



## QUESTION #10

Recent revisions to the Florida Building have changed the requirements for fire and smoke dampers. Can you please explain the current requirements?



Assembly Type	FBC Section	Rating	Purpose
Fire Wall	706	2 or 3 Hrs. (see Table 706.4)	Used to subdivide a building into areas that are considered to be separate buildings. Sometimes used to separate an expansion of an existing facility where existing portions do not comply with the current building construction type or for nursing home which would otherwise exceed the building area requirements limited by their construction type
<b>Fire Damper Required (717.5.1)</b>			
<b>Smoke Damper Required</b> if fire wall serves as a horizontal exit* (717.5.1.1)			
Fire Barrier	707	1 or 2 Hrs. based on use	Used to create an <i>occupancy separation</i> ; to separate <i>incidental use areas (laboratory, laundry, waste &amp; linen collection,...)</i> ; to create a <i>horizontal exit</i> ; to <i>enclose an exit stair</i> ; to <i>enclose an exit passageway</i> ; to <i>separate floor to floor separation of an atrium (where applicable)</i> ;
<b>Fire Damper Required (717.5.2)</b> Not required if: (717.5.2.Ex3) <ul style="list-style-type: none"> <li>• Ducted HVAC system (supply, return, and exhaust), AND:</li> <li>• Rating is 1 Hr. or less, AND:</li> <li>• Entire building has automatic sprinkler system, AND:</li> <li>• Ducts are minimum No. 26 gage sheet steel, AND:</li> <li>• Steel duct is continuous from appliance to outlet/terminal (no flex connection)</li> </ul> See also 717.5.2.Ex1 and 717.5.2.Ex2 for less common exceptions			
<b>Smoke Damper Required</b> , if fire barrier serves as a horizontal exit* (717.5.2.1)			
Fire Partition	708	1 Hr.	Elevator lobby separation where required (see section 3006.2)

Assembly Type	FBC Section	Rating	Purpose
Smoke Barrier	709	1 Hr.	Used to subdivide a Group I-2 occupancy or a Group B - Ambulatory Care Facility into <i>smoke compartments</i> to provide <u>safe haven</u> within the building during a fire.
	<p><b>Smoke Damper Required (717.5.5)</b>            Not Required if: (717.5.5.Ex1)</p> <ul style="list-style-type: none"> <li>• Duct openings are limited to a single smoke compartment, AND:</li> <li>• Ducts are constructed of steel</li> </ul> <p>Not Required if: (717.5.5.Ex2)</p> <ul style="list-style-type: none"> <li>• Group I-2, Condition 2: acute care hospitals, LTACH, psychiatric hospital, FSED (308.4.1), AND</li> <li>• Fully ducted (note: flex duct is acceptable), AND</li> <li>• Entire building has automatic sprinkler system, quick response</li> </ul> <p><i>Not Required if: (NFPA 101 - 19.3.7.3, 18.3.7.3)</i></p> <ul style="list-style-type: none"> <li>• <i>Fully ducted, AND</i></li> <li>• <i>Automatic sprinkler system</i></li> </ul> <p>Note: If the exception is applied, then neither a smoke damper, nor a fire damper is required.</p>		
Smoke Partition	710	None	Elevator lobby separation where required in a Group I-2 occupancy (see section 3006.2). Also, corridor walls in I-2 to built as smoke partitions (see section 407.3)
	<p><b>Smoke Damper Required, only</b> at air transfer openings, (710.8)            No dampers are required at duct penetrations, but the space around the duct must be filled with approved material to prevent the passage of smoke</p>		
*Horizontal Exit	1026	2 Hrs.	<b>Fire Wall</b> or <b>Fire Barrier</b> used to create a refuge area. Extends vertically through all levels of the building.

# QUESTION #10

Are the telecommunications rooms in health care facilities subject to the requirements of NFPA 75 ?





## Telecommunication Facilities and Information Technology Equipment

36.1 General.

36.1.1 Telecommunication facilities shall comply with NFPA 76.

36.1.2 Information technology equipment and information technology equipment areas shall comply with NFPA 75.



## 4.1 Fire Protection Approach.

The fire protection approach for ITE systems, ITE rooms, and ITE areas shall be permitted to be determined based on an evaluation of fire risks and hazards associated with the site and services provided and the business continuity planning and disaster restoration capabilities of the ITE specific to the site.



# Life Safety Questions

# QUESTION #1

## Question :

What determines the requirements for Boilers in a Health Care facility?



# ANSWER

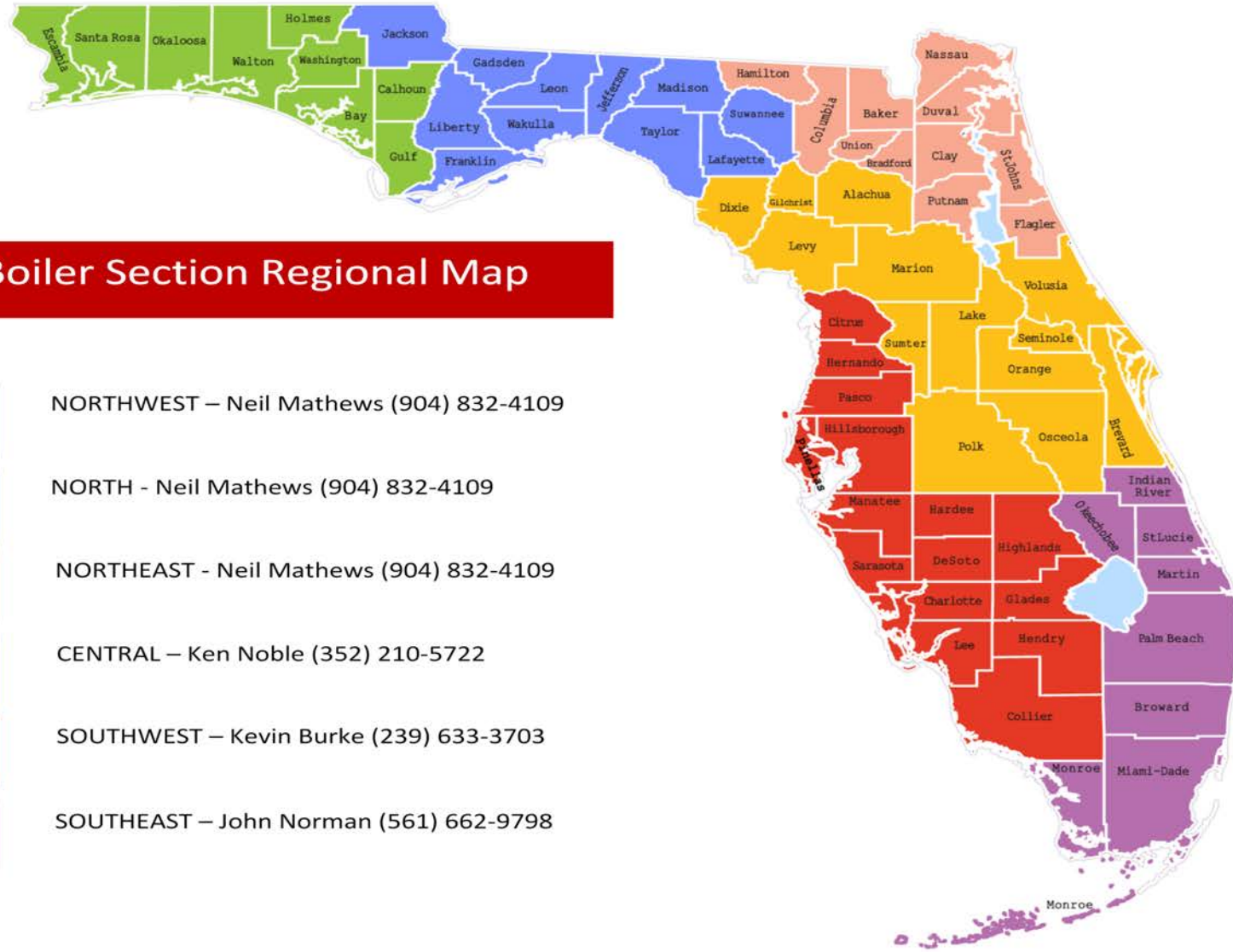
Boilers, includes hot water heaters and surgical sterilizer that meet or exceed 400,000 BTU/hr. heat input; or 210 degrees water temperature rating; or 120 gallons nominal water containing capacity; and hot water heating systems used for heating spaces, storage tanks. These vessels are all regulated by the Boiler Safety Section of the Bureau of Fire Prevention, Division of State Fire Marshal.

# ANSWER

For more information about Boiler Safety contact the Florida Fire Marshals Office at the link below:

[Boiler Safety | Bureau of Fire Prevention | Florida's State Fire Marshal \(myfloridacfo.com\)](#)





## Boiler Section Regional Map

-  NORTHWEST – Neil Mathews (904) 832-4109
-  NORTH - Neil Mathews (904) 832-4109
-  NORTHEAST - Neil Mathews (904) 832-4109
-  CENTRAL – Ken Noble (352) 210-5722
-  SOUTHWEST – Kevin Burke (239) 633-3703
-  SOUTHEAST – John Norman (561) 662-9798

## QUESTION #2

When does the new code editions take affect?





# ANSWER

**The 8<sup>th</sup> Edition of the Florida Fire Prevention Code effective date is 31 December 2023.**

**NFPA 1 and 101 and Referenced Codes.**

**See the Florida Fire Marshals Web Page for more information.**



# QUESTIONS?

